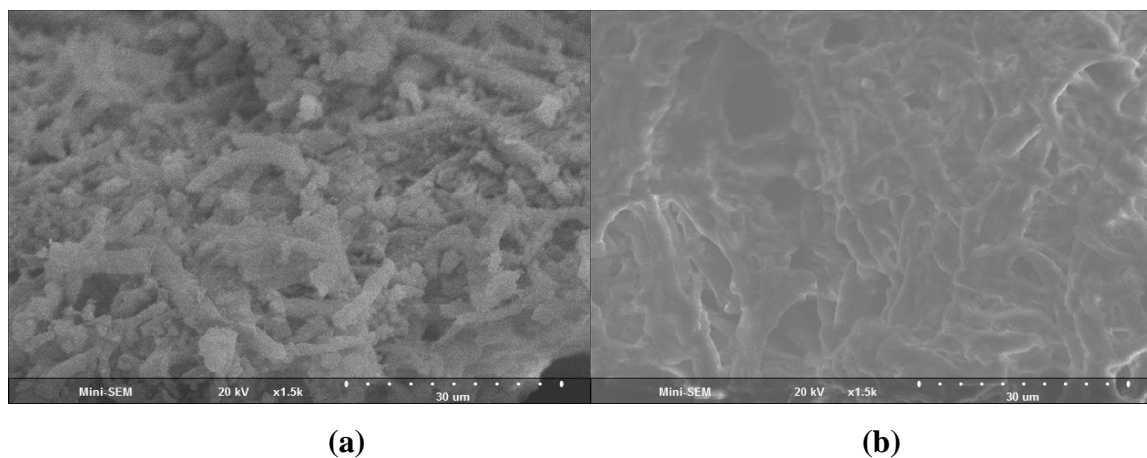
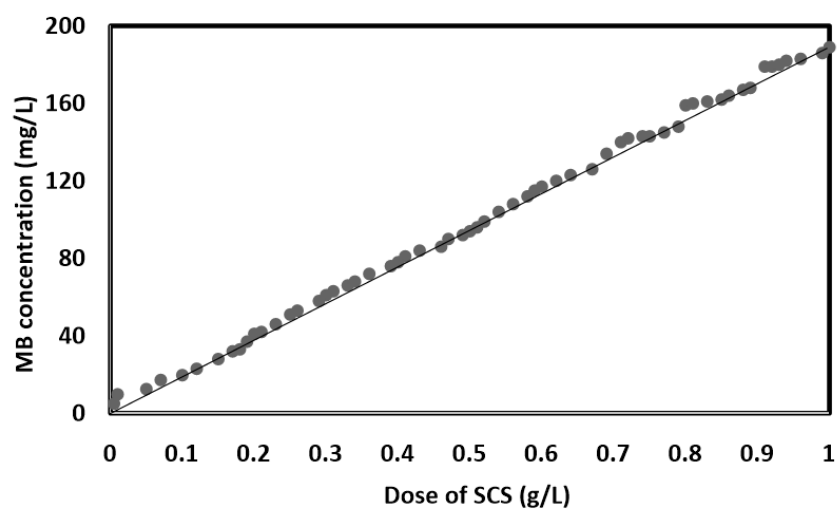


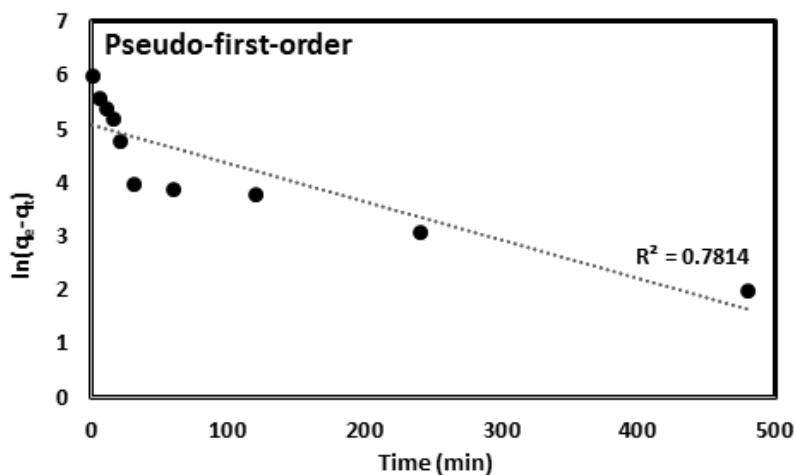
## Supplementary Materials



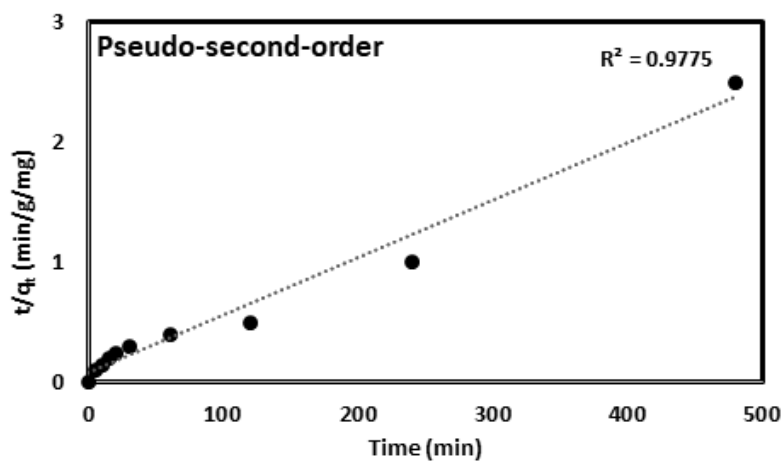
**Fig. S1.** A SEM image of (a) CS and (b) SCS.



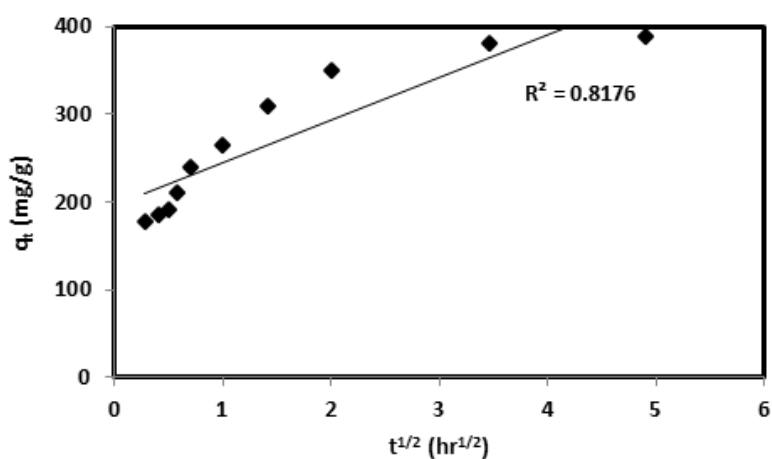
**Fig. S2.** Removal process different amount of MB according to various of SCS. (V: 1 L, pH: 7, mixing speed: 120 rpm, T: 298 K)



(a)

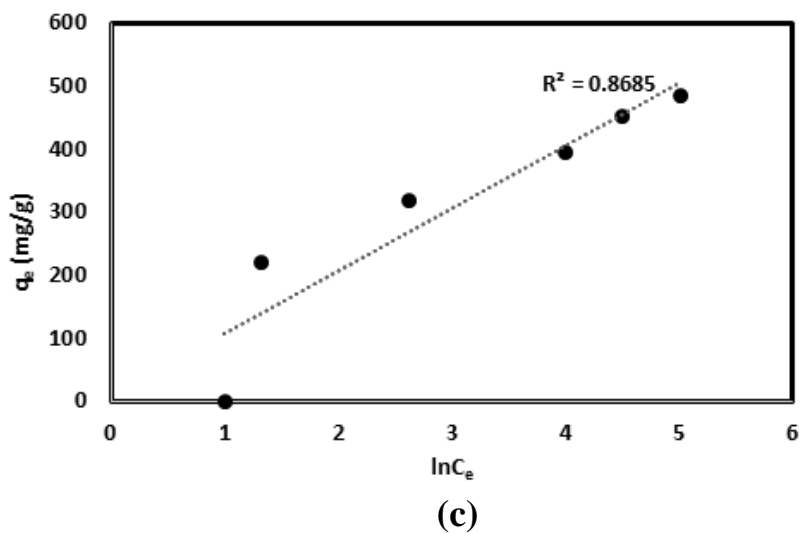
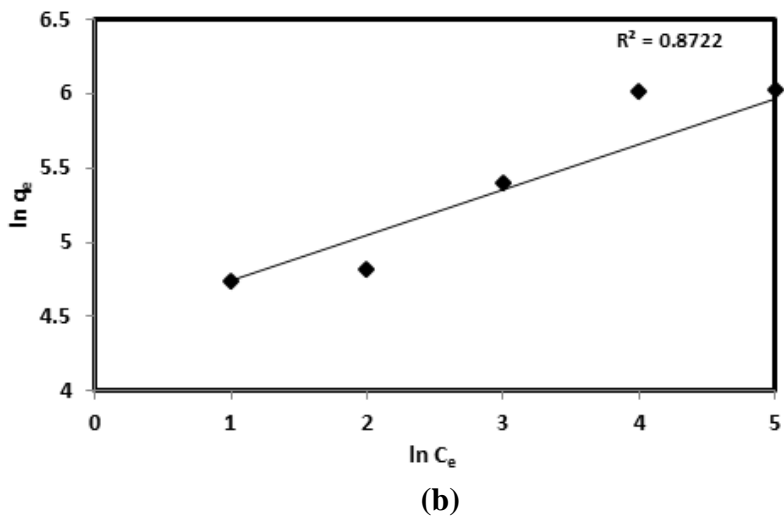
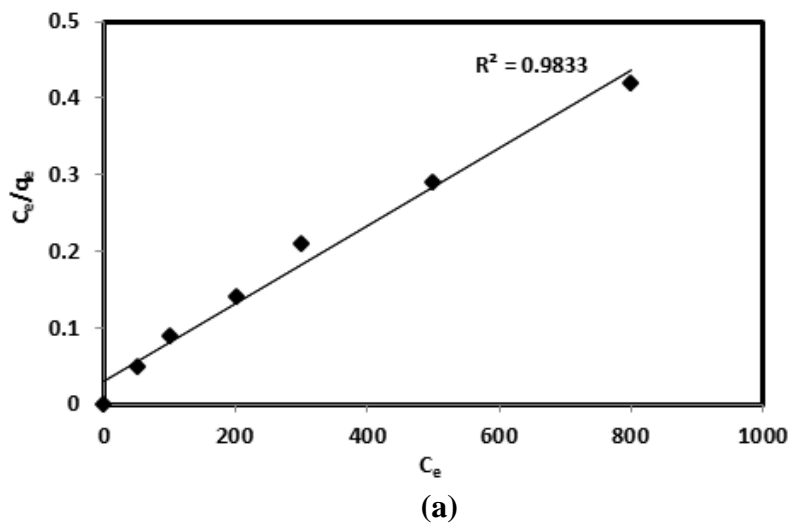


(b)

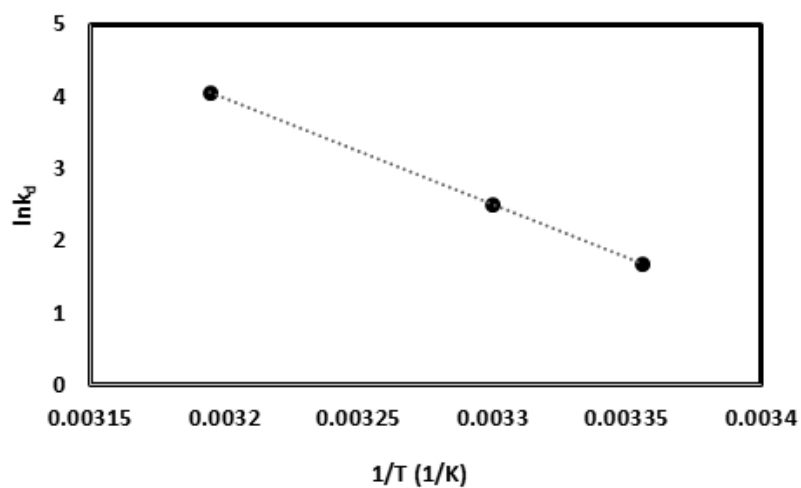


(c)

**Fig. S3.** A plot of (a) pseudo-first-order and (b) pseudo-second-order and (c) intraparticle diffusion for the adsorption of MB onto SCS.



**Fig. S4.** A linear plot of (a) Langmuir (b) Freundlich (c) Temkin.



**Fig. S5.** Plot of  $\ln k_d$  vs  $1/T$  for determining of thermodynamic parameters for the adsorption of MB onto SCS.